

BUSD School Planning for 2020-21

Presentation to the Berryessa Union Board of Trustees
Wednesday, July 15, 2020



Pathway to the Future

BUSD Planning Considerations



Pathway to the Future

**Health and Safety
of Students, Staff &
Families**

**Equitable Student
Learning
Environments &
Social and Emotional
Well-Being**

**Flexibility &
Support for All to
Adapt and Innovate
under various
circumstances**

**Ability to provide
and implement
Safeguards for
various scenarios**

2020-21 BUSD Planning Process



Pathway to the Future

- Evaluate and plan for three possible scenarios:



Full Distance
Learning



Blended/Hybrid
Format



Full Reopening

- Utilize SCCOE and SCCPHD Guidance (Received June 30, 2020)
- AB 77 Legislation from State of California
- Health & Wellness, School Operations, Teaching & Learning, Financial & Procurement Implications
- Community Engagement/Communication - Surveys, Town Hall, Focus Groups, FAQ, Community Updates

Stakeholder Engagement



Pathway to the Future

- District Action Team - Instructional Programs, Safety & Operations, Human Resources
- Elementary Work Group
- Middle School Work Group
- Focus Groups - Parents, Teachers, Students
- Community Surveys
- Town Halls - June 29, 2020 & July 14, 2020
- Share with BUSD Community Engagement Webpage

Addressing Priorities for Each Scenario



Pathway to the Future

INSTRUCTION

Student engagement and options for learning models

TECHNOLOGY

Device access for students and staff; technology support and training

WELLNESS

Social and Emotional Learning, Safety, and Health

FACILITIES

Cleaning, disinfection, and safety protocols

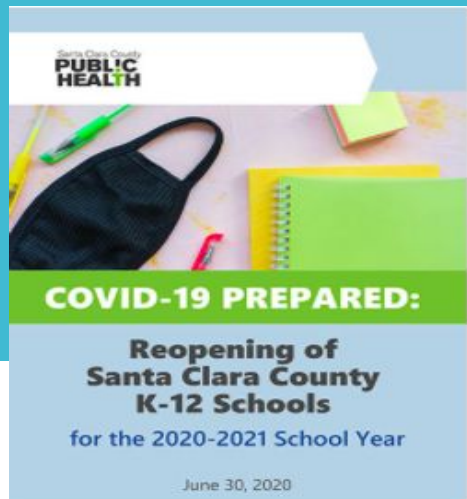
OPERATIONS

Guidelines, transportation, visitors/volunteers, special events

COMMUNICATION

Regular communication with stakeholders, email, surveys, newsletters, social media

Factors the SCC Public Health Department will consider include:



- Continually evolving scientific understanding of COVID-19
- The number of current COVID-19 cases
- The degree to which schools are contributing to community spread of COVID
- The capacity of our health system to identify and care for cases and prevent transmission in healthcare settings
- The availability and use of widespread testing to identify new cases; county residents' ability to quickly and effectively isolate or quarantine themselves when sick
- Our community's continued cooperation in practicing physical distancing, using face coverings, and taking other preventive measures.

Courtesy of SCCPHD Reopening Schools Guidance

Preventing COVID-19 Transmission by Age Group

Organizing Principle:
Stable Cohorts

Organizing Principle:
Physical Distancing and
Face Coverings



Less feasible to limit close contact and wear face coverings

More feasible to maintain stable cohorts

Greater need for in-person and group-based instruction with close contact to support social-emotional and academic development

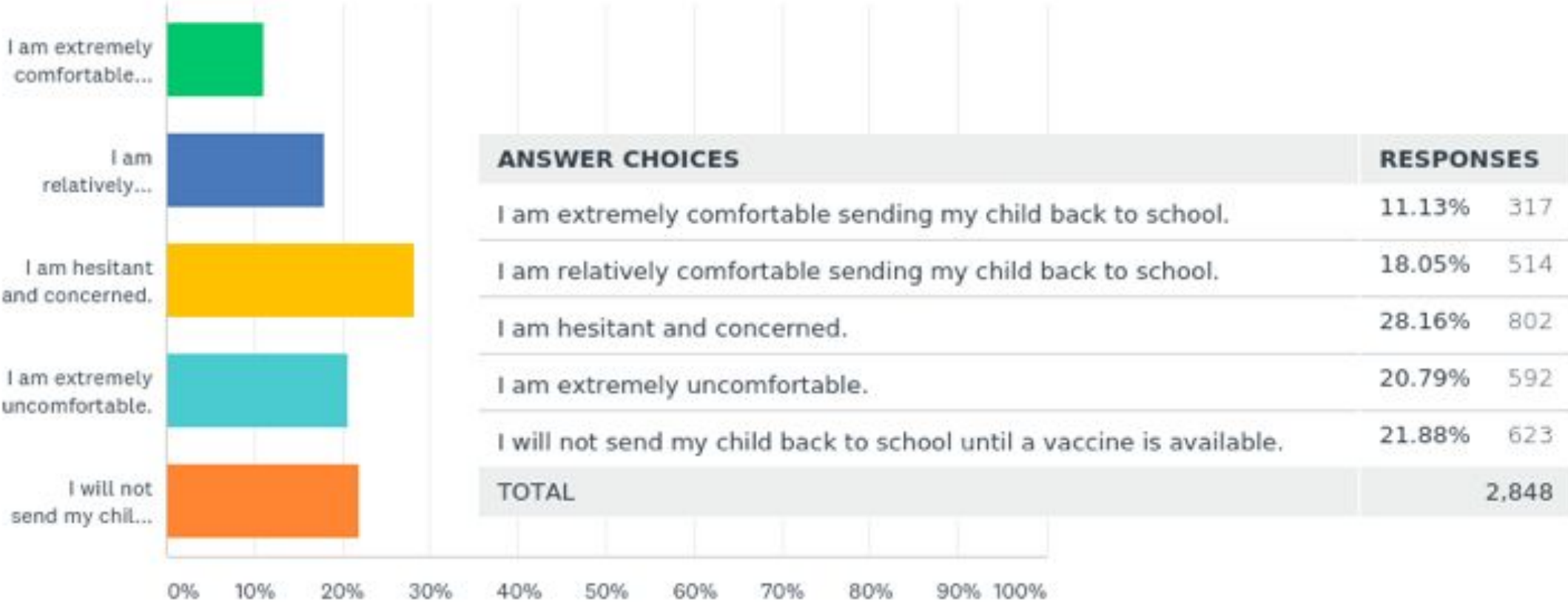
More feasible to limit close contact and wear face coverings

Less feasible to maintain stable cohorts

Lesser need for in-person or group-based instruction with close contact to support social-emotional and academic development

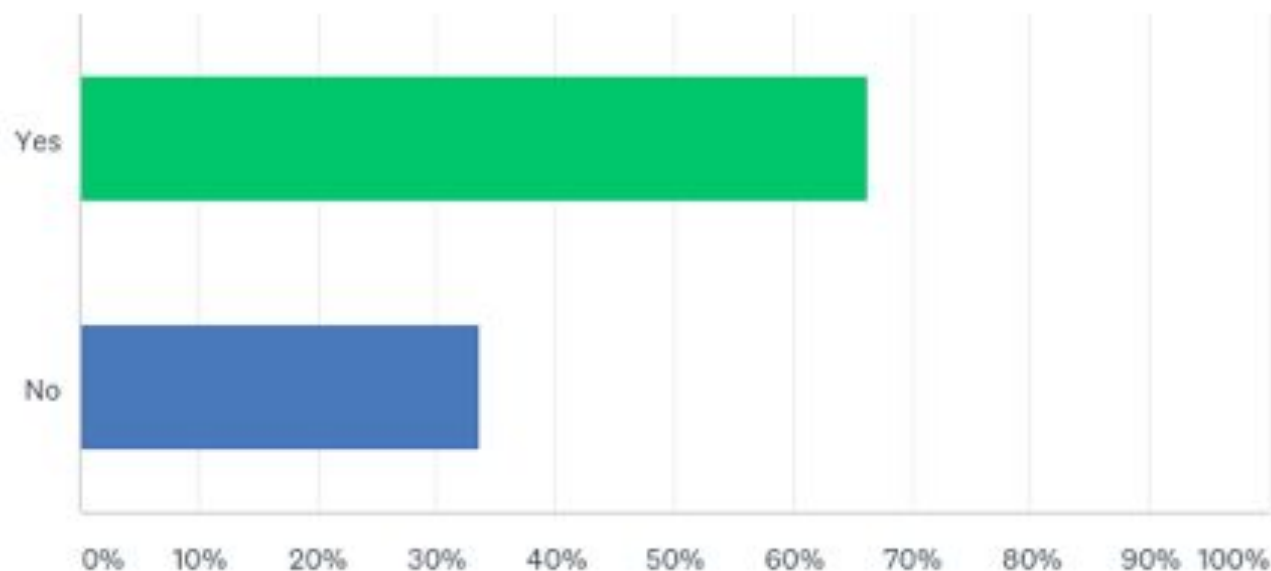
Q4: Given opinions change as new information is learned, if we are allowed to return to school and all the health safeguards recommended by SCCPHD were in place, would you send your child back to school?

Parent Survey: Answered: 2,848 Skipped: 0 (As of July 14, 2020)



Q5: Regardless of the instructional model selected for reopening schools, I prefer a distance learning program for my child(ren).

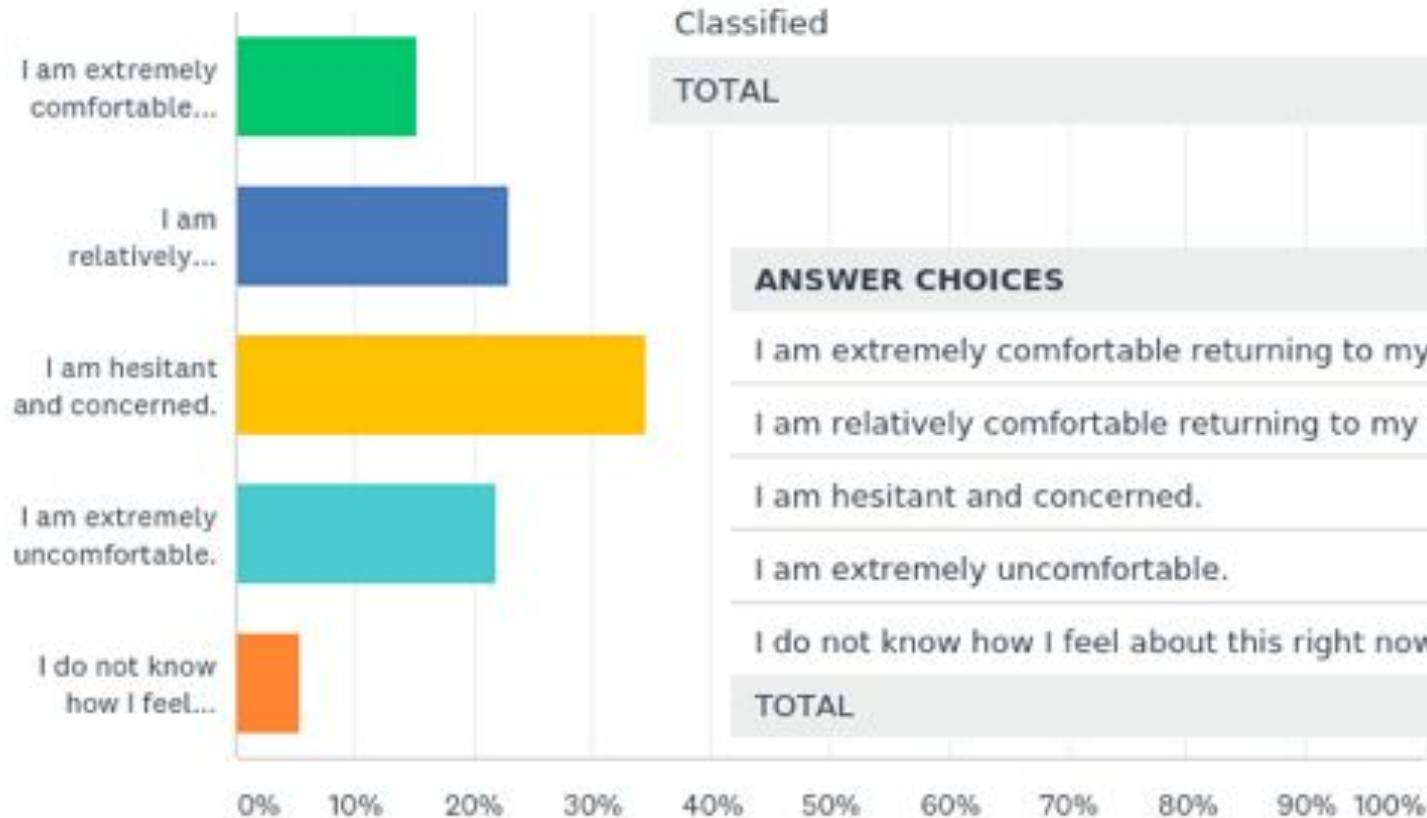
Parent Survey: Answered: 2,848 Skipped: 0 (As of July 14, 2020)



ANSWER CHOICES	RESPONSES
Yes	66.22% 1,886
No	33.78% 962
TOTAL	2,848

Q3: Given opinions change as new information is learned, if we are allowed to return to school and all the health safeguards recommended by SCCPHD were in place, would you be ready to return to work on site?

BUSD Staff: Answered: 552 Skipped: 0
(As of July 14, 2020)



BUSD PHASE-IN APPROACH

PHASE 1

**Full Distance Learning
for
ALL Students**

PHASE 2

**Full Distance Learning
and
Launch in-person
opportunities** for
targeted, specialized
groups by grade or
identified need, such as
students with disabilities,
homeless/foster youth,
ELs, TK/K students, etc.

PHASE 3

Middle School

Distance Learning with
small group tutorials
focused on targeted,
specialized groups by
grade or identified need

Elementary School

Launch Hybrid Model
(A/B Cohorts - 2 days "in
person" with 3 days
Distance Learning)

PHASE 4

Full Reopening for ALL
students with limited to
no restrictions

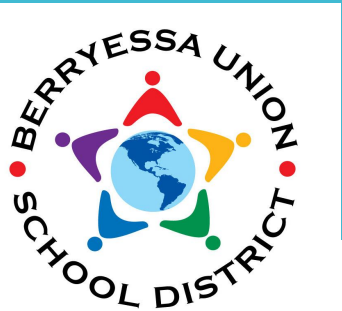


*** Continuing along this path as we monitor county
conditions, procure & implement safety protocols, and
determine staffing capacity through the end of September.

Tentative Phase 3 launch date of September 28, 2020.

100% Full Distance Learning Alternative Program Option Available to Families

BACK TO SCHOOL PHASE-IN APPROACH



Pathway to the Future

- **All students begin the school year in distance learning.**
- The health and safety of our students and staff is our top priority.
- Procuring and implementing all safeguards requires extra time.
- Cautiously and safely transition from distance learning to hybrid to full in-person learning.
- Determination of staffing capacity
- 100% distance learning will continue to be options for families.
- Prioritize phasing of in-person small groups for TK, K, special education students, and other special groups such as English learners, homeless, and foster youth
- Establish orientation events for TK, K, and grade 6.
- **First weeks focus on community-building & training:** welcoming activities, health and safety training, digital citizenship lessons, social-emotional learning lessons, parent education, student assessments, and blended learning practice.

Instructional Models



Pathway to the Future



STATE GUIDELINES & AB 77/ SB 98 HIGHLIGHTS

INSTRUCTIONAL MINUTES

- Offer a full year of 180 days of instruction
- 180 minutes per day for TK/Kindergarten
- 230 minutes per day for grades 1 - 3
- 240 minutes per day for grades 4 - 8
- Physical Education minutes are waived

ATTENDANCE

- Document daily student attendance
- Weekly engagement record
- Track completion of assignments
- Progress monitoring
- Tiered re-engagement strategies for students who are absent more than 60% (3 days) of the school week

DISTANCE LEARNING

- All students have access to computer & internet
- Provide standards-aligned content & instruction equivalent to in-classroom instruction
- Supports for specialized groups
- Accommodations necessary for IEP implementation
- Daily live interaction with teachers & classmates

CONTINUITY OF LEARNING PLAN

- Due September 30th
- Describe response to COVID-19 on in-school & distance learning models, attendance strategies, learning loss, and mental health
- Provide support for ELs, students with disabilities, SED students, and students who have fallen behind in their academic progress

Elementary School SAMPLE Schedule (Distance Learning)

	Monday	Tuesday	Wednesday	Thursday	Friday
8:30 - 9:00 AM	Morning Check-In w/ all students	Morning Check-In w/ all students	Morning Check-In w/ all students	Morning Check-In w/ all students	Morning Check-In w/ all students
9:00 - 10:00 AM	Teaching Block 1	Teaching Block 1	Small Group Instruction	Teaching Block 1	Teaching Block 1
10:00 - 10:15 AM	Recess/Break	Recess/Break	Recess/Break	Recess/Break	Recess/Break
10:15 - 11:45 AM	Teaching Block 2	Teaching Block 2	Small Group Instruction	Teaching Block 2	Teaching Block 2
11:45 - 12:45 PM	LUNCH	LUNCH	LUNCH	LUNCH	LUNCH
12:45 - 2:00 PM	Teaching Block 3	Teaching Block 3	<i>Teacher Prep, Staff Meetings</i>	Teaching Block 3	Teaching Block 3
2:00 - 2:30 PM	Afternoon Check-In w/ all students	Afternoon Check-In w/ all students	<i>Professional Development</i>	Afternoon Check-In w/ all students	Afternoon Check-In w/ all students

Elementary School SAMPLE Schedule (Hybrid Model)

	Monday (Cohort A)	Tuesday (Cohort A)	Wednesday	Thursday (Cohort B)	Friday (Cohort B)
8:30 - 9:00 AM	Morning Check-In w/ all students	Morning Check-In w/ all students	Morning Check-In w/ all students	Morning Check-In w/ all students	Morning Check-In w/ all students
9:00 - 10:00 AM	Teaching Block 1	Teaching Block 1	Small Group Instruction	Teaching Block 1	Teaching Block 1
10:00 - 10:15 AM	Recess/Break	Recess/Break	Recess/Break	Recess/Break	Recess/Break
10:15 - 11:45 AM	Teaching Block 2	Teaching Block 2	Small Group Instruction	Teaching Block 2	Teaching Block 2
11:45 - 12:45 PM	LUNCH	LUNCH	LUNCH	LUNCH	LUNCH
12:45 - 2:00 PM	Teaching Block 3	Teaching Block 3	<i>Teacher Prep, Staff Meetings</i>	Teaching Block 3	Teaching Block 3
2:00 - 2:30 PM	Afternoon Check-In w/ all students	Afternoon Check-In w/ all students	<i>Professional Development</i>	Afternoon Check-In w/ all students	Afternoon Check-In w/ all students

Middle School SAMPLE Schedule (Distance Learning)

	Monday	Tuesday	Wednesday	Thursday	Friday
8:30 - 8:40 AM	Homeroom	Homeroom	Teacher Prep	Homeroom	Homeroom
8:45 - 9:35 AM	1st period	4th period	Small Group Tutorials	1st period	4th period
9:40 - 10:30 AM	2nd period	5th period	Small Group Tutorials	2nd period	5th period
10:30 - 10:45 AM	Break	Break	Break	Break	Break
10:45 - 11:35 AM	3rd period	6th period	Small Group Tutorials	3rd period	6th period
11:40 - 11:55 AM	Advisory	Advisory	Advisory	Advisory	Advisory
12:00 - 1:00 PM	Lunch	Lunch	Lunch	Lunch	Lunch
1:05 - 2:35 PM	Small Group Tutorials	Small Group Tutorials	Teacher Prep, PD & Staff Meetings	Small Group Tutorials	Small Group Tutorials

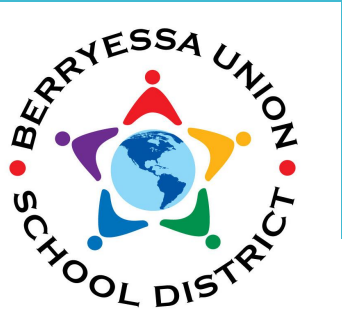
Safety, Operations, Nutrition, And Technology



Pathway to the Future



Chromebook & Hotspot Technology Support



Pathway to the Future

- Preparing for 1:1 for all BUSD students.
- All students will receive their Chromebooks at their own school site.

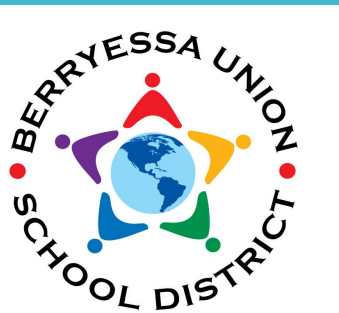
Disbursement

- Elementary students will receive Chromebook as they check out other regular books.
- Middle School students will receive Chromebook at scheduled curbside pick up. Similar to first Chromebook deployment. (*Schedules TBD*)
- We have hotspots (Wifi) ready for deployment for students who will need home Wifi support.

Support

- New software and digital tools will be available for all teachers and students to enhance distance learning through all Chromebooks.
- New training will be provided for all teachers, paras, and parents on new tools to enhance distance learning.

Student Nutritional Services



Pathway to the Future

Meal Process

- School meals provided each school day and distributed from the Cafeteria and/or Curbside, depending on the presence of students.
- Meals will be pre-packaged (no salad bars) and identical, whether they are served from the Cafeteria or from Curbside.
- A Grab and Go breakfast will be offered during lunch service (to be eaten the next day) since the recess/morning break time will not be long enough to accommodate social distancing in the Cafeteria or curbside pick-up.
- Families will be able to pick-up meals from one Curbside location for their students who are 100% distance-learning and attend different schools within the district.

Safety

- Plexiglass barriers will be installed in front of elementary cashier computer carts and on kitchen service counters that do not currently have pass through windows or sneeze guards; social distancing in the Cafeteria will be established by using floor stickers set 6 feet apart and physical barriers; hand sanitizer stations will be positioned in front of service counters

Student Nutritional Services



Pathway to the Future

Payment Procedures

- For the 2020-21 school year, meals must be charged to students according to their eligibility under the National School Lunch Program.
- Tablets with ID card scanners will be used to charge middle school students at Curbside; student ID cards will be pulled from mobile ID card racks and used to charge elementary students.
- Parents will be encouraged to pre-pay for meals online; cash/checks will be accepted, but change will not be provided. Please provide exact cash amount.
- Parents will also be encouraged to apply for free & reduced-price meals online; any changes to the usual policies and procedures will be communicated with parents prior to the start of school.

Daily Cleaning and Disinfecting



Pathway to the Future

- Custodial schedules will be adjusted to allow for additional disinfecting
- Daily custodial cleaning and disinfecting log
- Restrooms will be cleaned twice daily
- Hard surfaces including door handles and desk tops will be disinfected daily
- Fog Machines will be used every night in all classrooms
- Use of Electrostatic Sprayers will be used weekly
- All classrooms will be supplied with microfiber cloths and/or paper towels and disinfectant spray

Physical Distancing



Pathway to the Future

Classrooms

- Limited amount of students per classroom
- Student desks will be set up at a minimum 6 feet apart and also a minimum of 6 feet from the teacher
- All unnecessary classroom items including furniture will be removed to accommodate 6 foot distancing

Offices

- School and district front offices will have sneeze guards installed

Health and Hygiene



Pathway to the Future

Ventilation

Upgraded HVAC filters from MERV 8 to MERV 13

- MERV 13 Filters are high capacity filters
- More surface area than a standard filter
- Tighter knit construction allowing finer filtration value down to .02 microns
- Last longer

Health and Hygiene



Pathway to the Future

Hand Washing Sinks/ Hand Sanitizer Stations

- Students will have access to a hand washing sinks and/or hand sanitizer stations inside every classroom
- Additional hand washing stations will be available around campus
- Portable Hand sanitizer stations will be available around campus
- Every office entryway will have hand sanitizer stations installed

Essential Health and Safety Supplies/ Equipment



Pathway to the Future

- 3,268 Adult cloth face masks
- 7,836 Adult disposable face masks
- 13,850 Student cloth face masks
- 13,850 Student disposable face masks
- 1,754 Face shields
- 229 IR thermometers
- 440 Hand sanitizer dispensers
- 100 Hand sanitizer stands
- 183 Gallon hand sanitizer
- 380 Hand sanitizer cartridges
- 20 Electrostatic sprayers
- TBD UV sanitizing technology cabinet
- TBD Sneeze guards for front offices
- TBD Hand washing stations

Next Steps...



Pathway to the Future

- Establish agreements with employee association partners (CTAB, CSEA, and Teamsters)
- Continue to enhance & scale distance learning model
- Provide supports for staff collaboration, professional development, and training
- Monitor safety supply, define protocols, train & educate BUSD staff and community
- Continue to work collaboratively with SCCPHD for guidance as it evolves
- Determine staffing capacity for various models
- Provide timely communication to all stakeholders regarding phase-in progress and other areas of interest/concern

Discussion & Action



Pathway to the Future

Staff Recommendation:

As we prioritize safety & health of students and staff as well as high quality teaching & learning, we are recommending the Board approve the plan to move forward with a phase-in approach with distance learning as the instructional model for the start of the 2020-21 school year.

